

23.10.2013



# Renovating Buildings of Value

**Julian Weyer**  
Partner, Architect maa.

C.F. Møller



LONDON

AALBORG

ÅRHUS

KØBENHAVN

OSLO

STOCKHOLM

**C.F. Møller**



WE SUPPORT

### THE TEAM



\* 3 Partners | 1 CEO | 16 Branch Heads/Leaders | 145 Architects | 8 Designers | 10 Landscape Architects | 35 Consulting Architects | 17 Technical Illustrators/ draftsmen | 13 Consultants | 8 IT | 27 Administrators/c.c. | 10 Engineers | 26 Trainees

### NATIONALITIES



\* 21 Danish | 40 Swedish | 21 Norwegian | 5 British | 4 German | 4 Polish | 3 American | 3 Italian | 3 Icelandic | 2 Spanish | 2 Fine | 1 Australian | 1 Russian | 1 Mexican | 1 Hungarian | 1 Ukrainian | 1 Iranian | 1 Portuguese

### GENDER



\* 148 women | 161 men



C.F. Møller



C.F. Møller

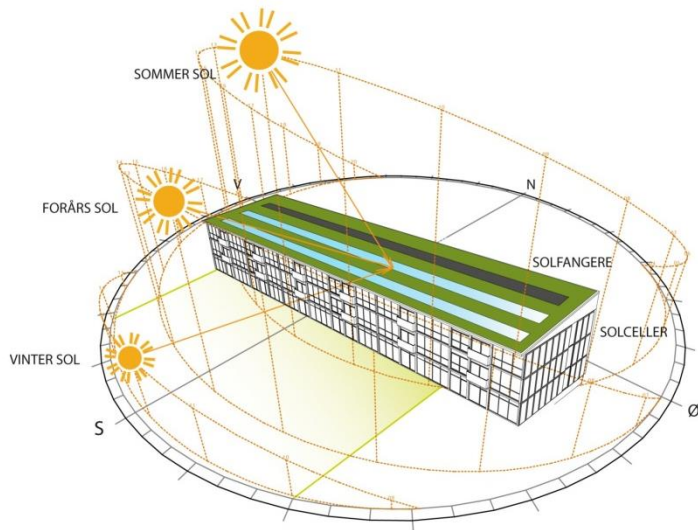


C.F. Møller



C.F. Møller

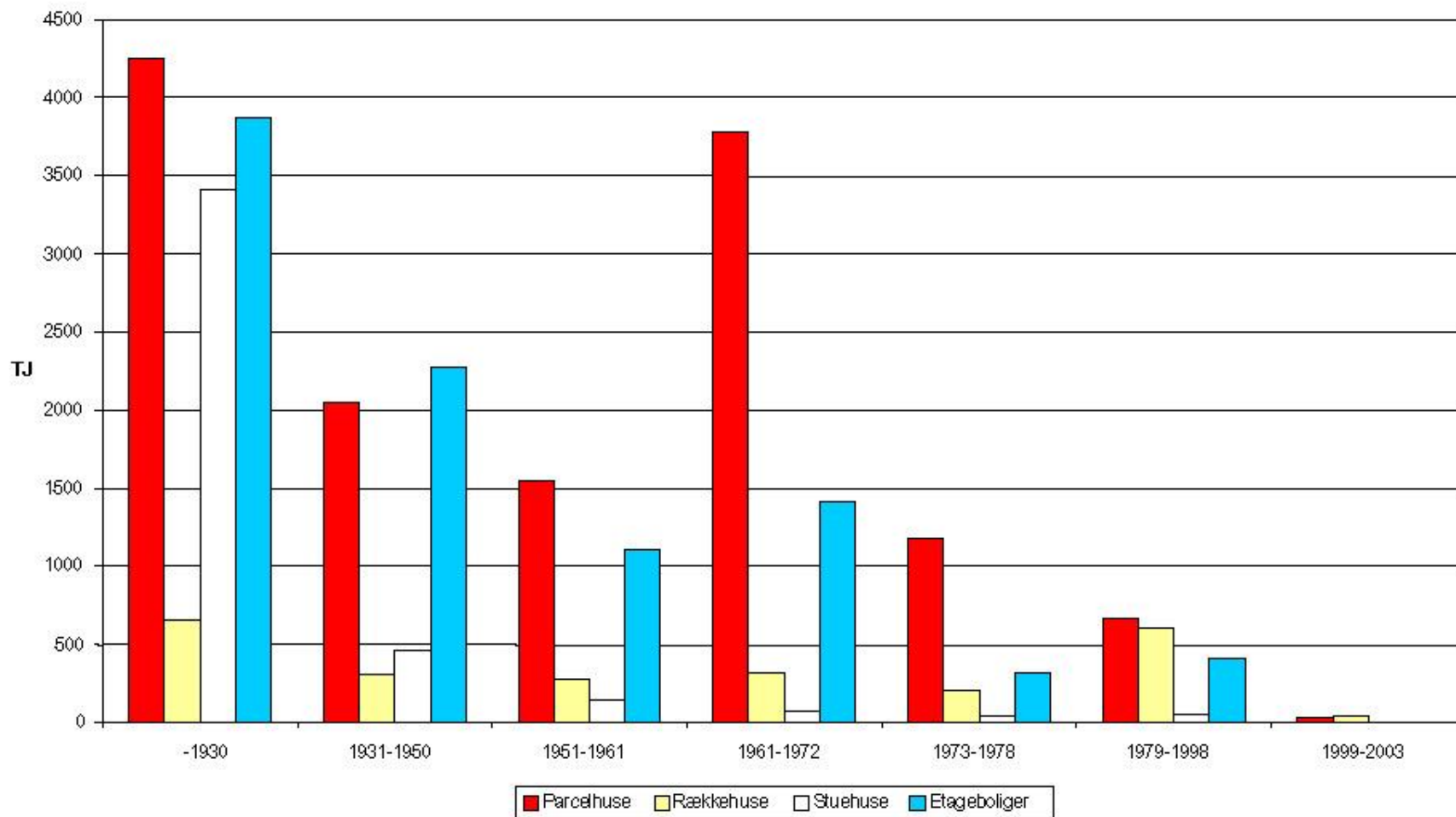
# ENERGY AS INITIATOR OF RENOVATION





C.F. Møller





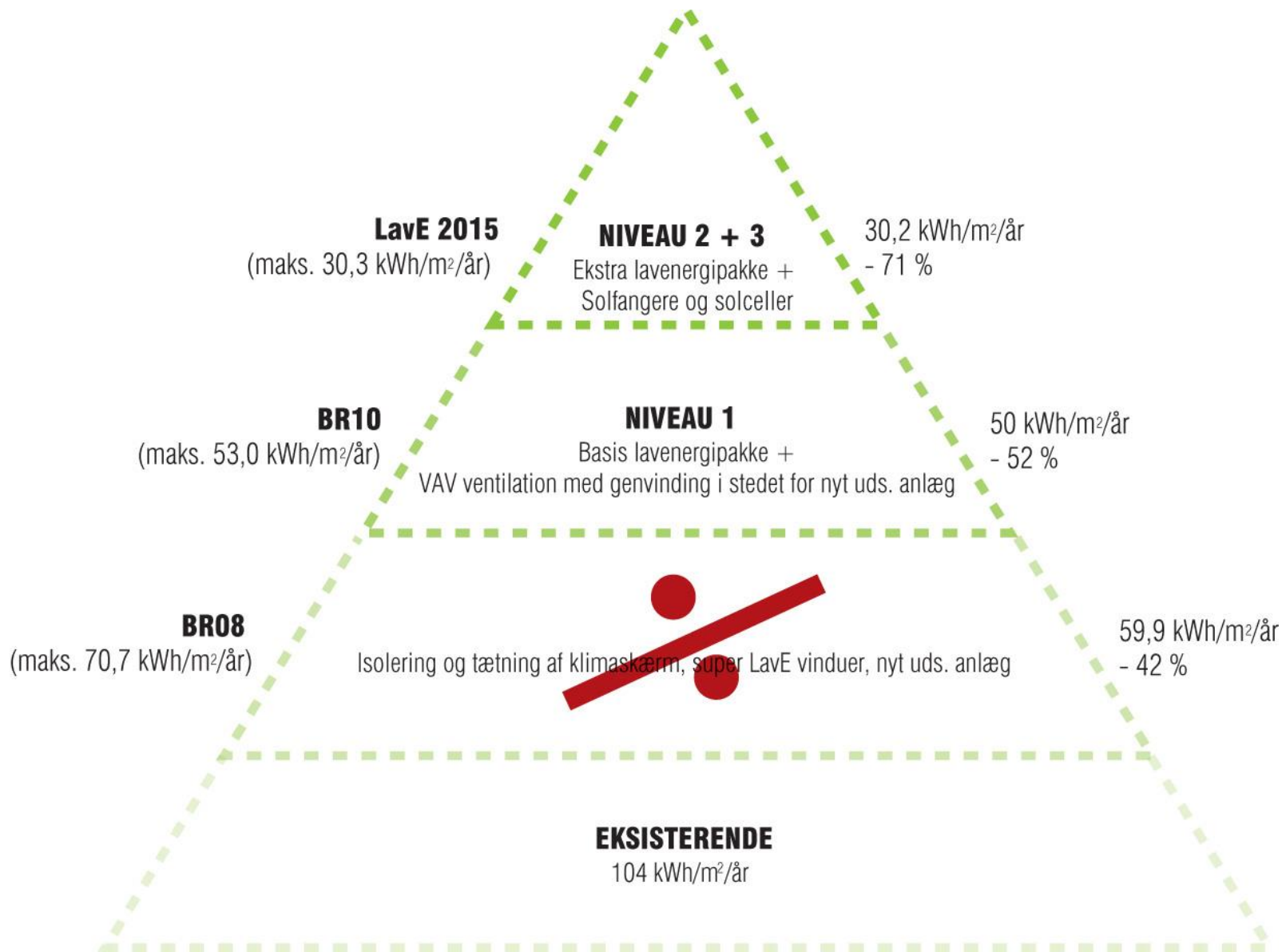
Figur 10. Energibesparelsespotentialitet ved energirenovering af parcelhuse, rækkehuse, stuehuse og etageboliger opført i syv byggeperioder.



C.F. Møller



C.F. Møller





DK  
Benzin

Smøring

Auto-værksted

Vaskehal

DK

Etikette 3,50 m.

C.F. Møller



C.F. Møller



C.F. Møller



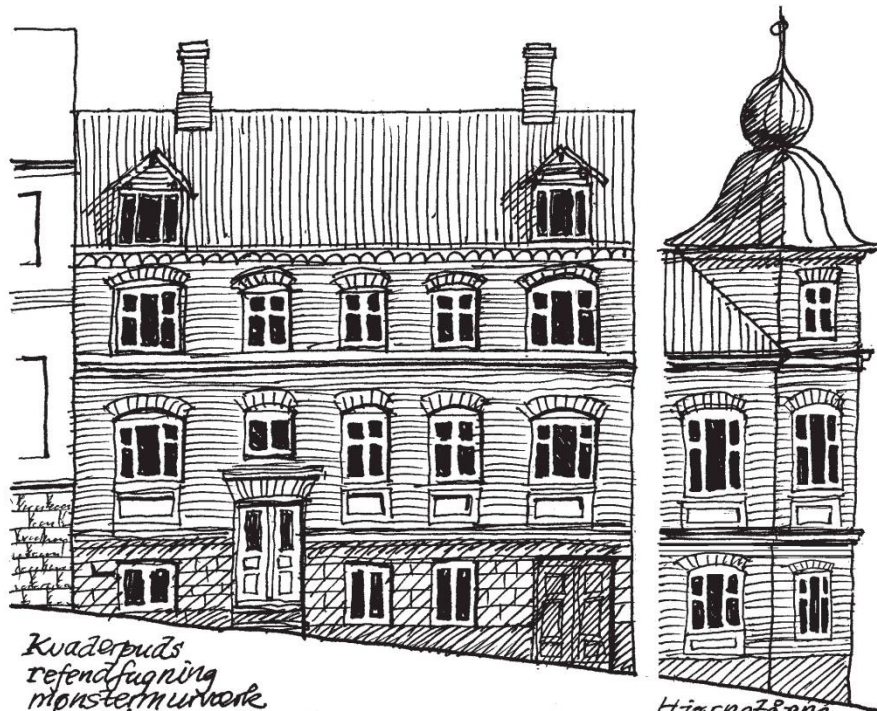
C.F. Møller



# ARCHITECTURE & AESTHETICS AS A CHALLENGE

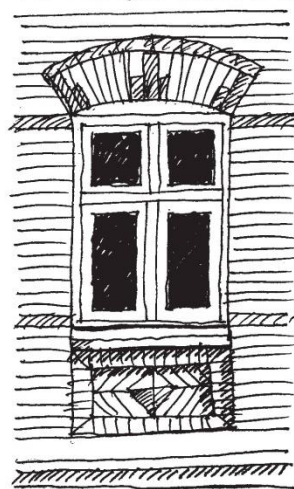


C.F. Møller

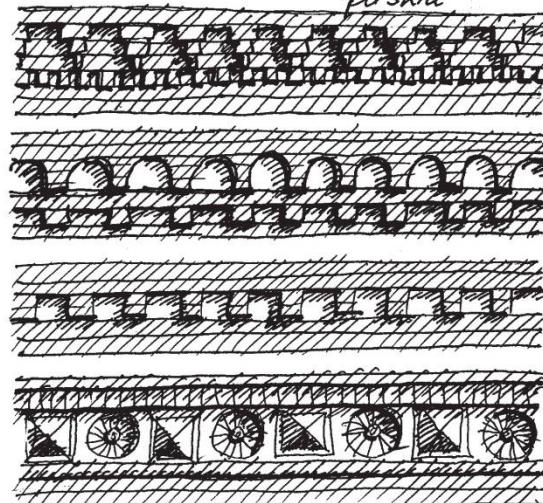


Kvaderpuds  
refendfugning  
monstermurværk  
murværesdekorationer

Hjørnetårne  
på skrå

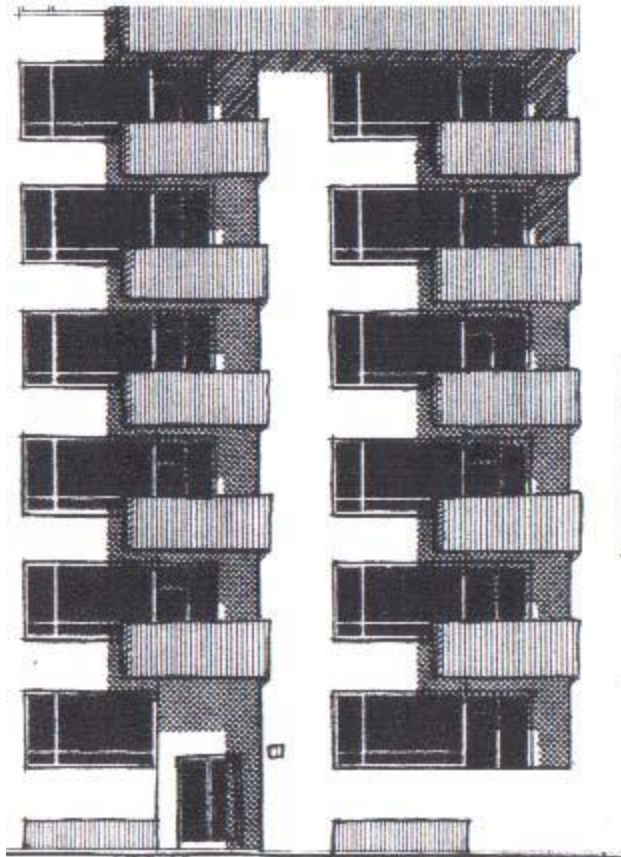


Detalje af vindue  
i facade murværk  
Sneu Vårhus 08

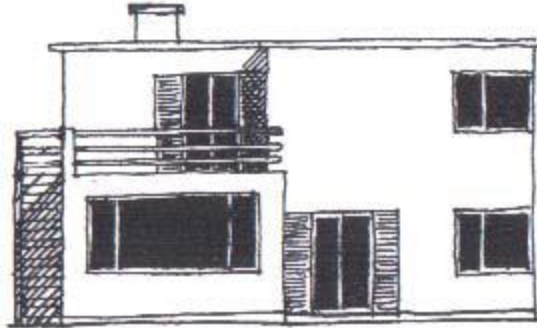
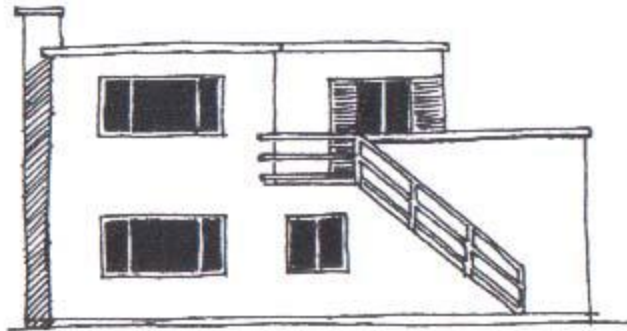


Forskellige murede gesimser og bånd  
med mursten, formsten og terracotta

# FUNKTIONALISME



Altan-kornaphus (Etagehus)

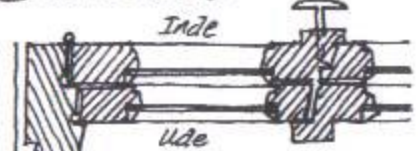
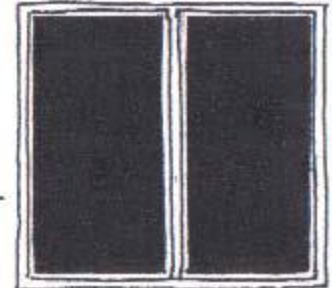


Funkisvilla 1930



Bungalow 1932-36

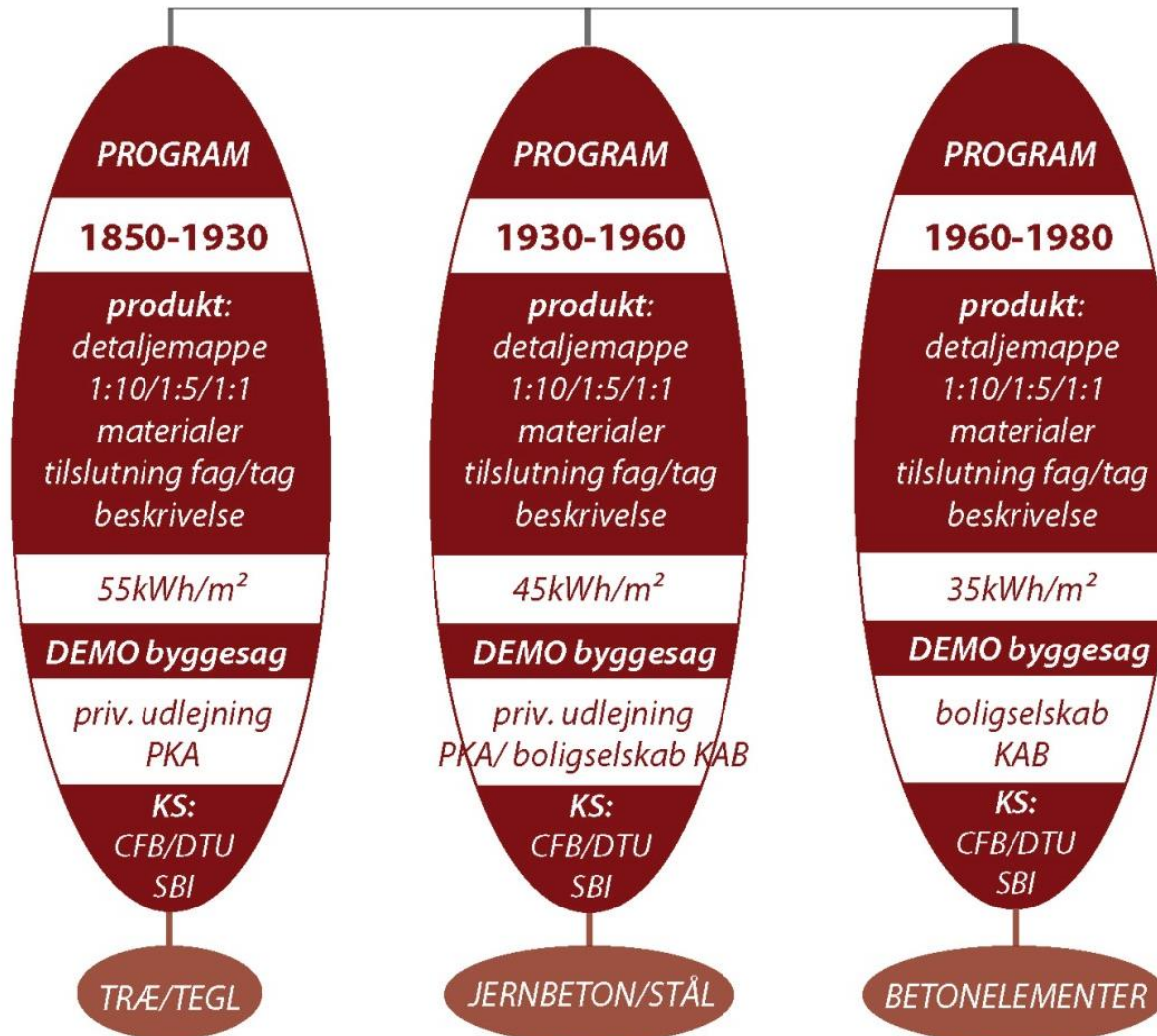
1930-1960



Hjørnevindue af træ  
© Sven Vedstrup 04

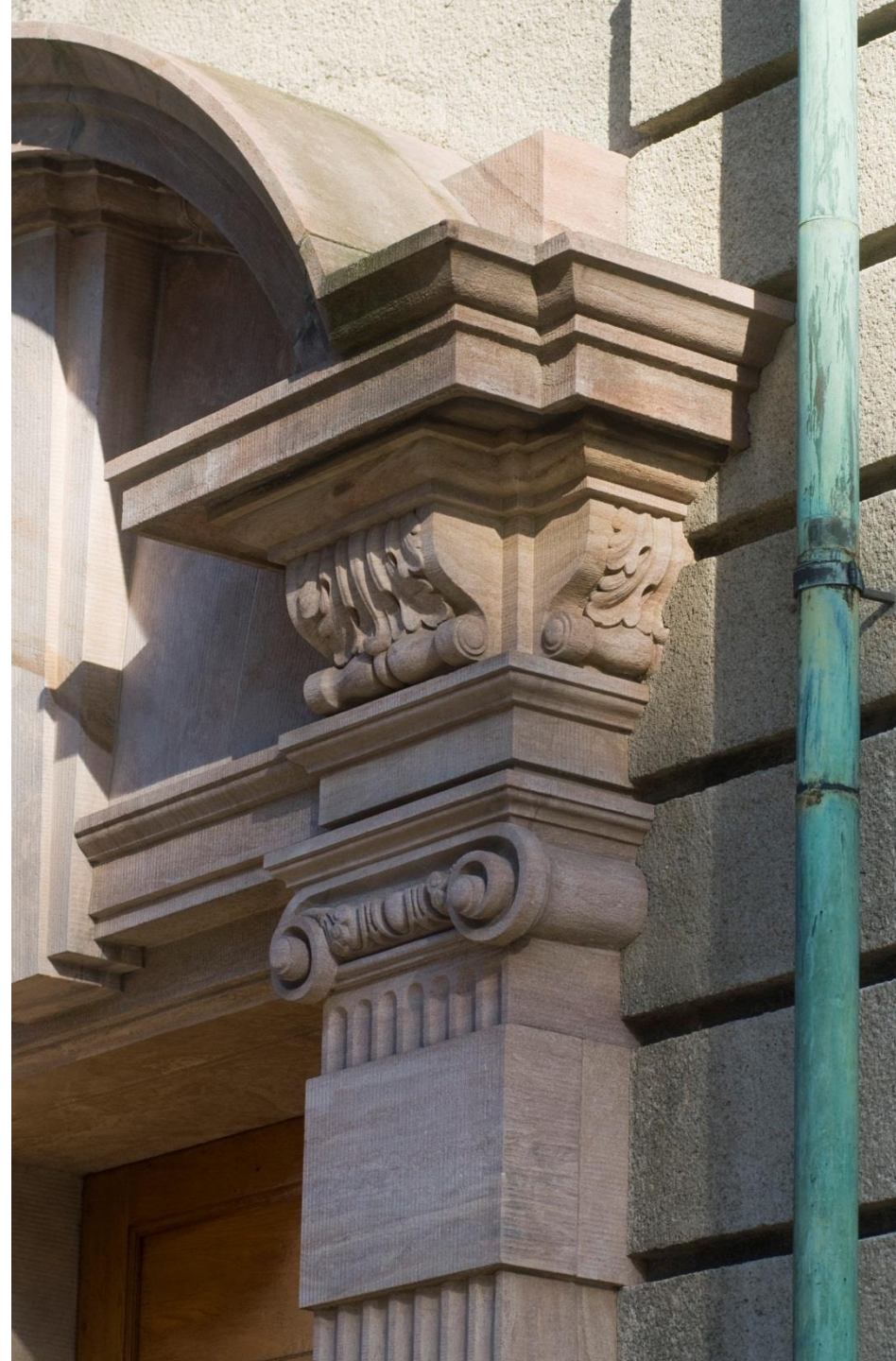
**Energirenovering af etageejendomme**  
**Udgør 17-18% af den eksisterende bygningsmasse**

**KORTLÆGNING** af eksist. viden og arkitektonisk/tekniske særlige vilkå





C.F. Møller





C.F. Møller



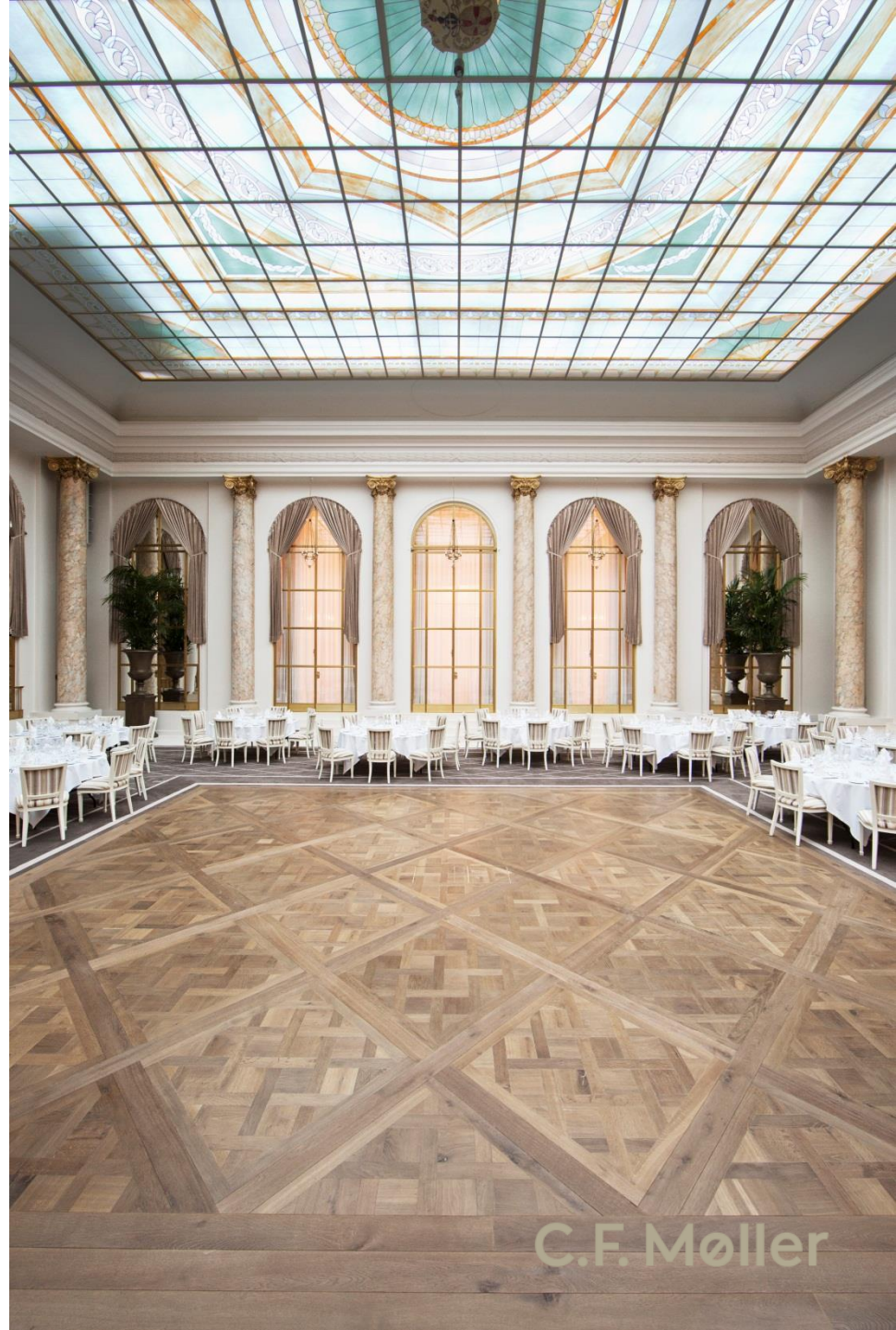
C.F. Møller





HOTEL D'ANGLETERRE

C.F. Møller



C.F. Møller





C.F. Møller



C.F. Møller







C. F. Møller









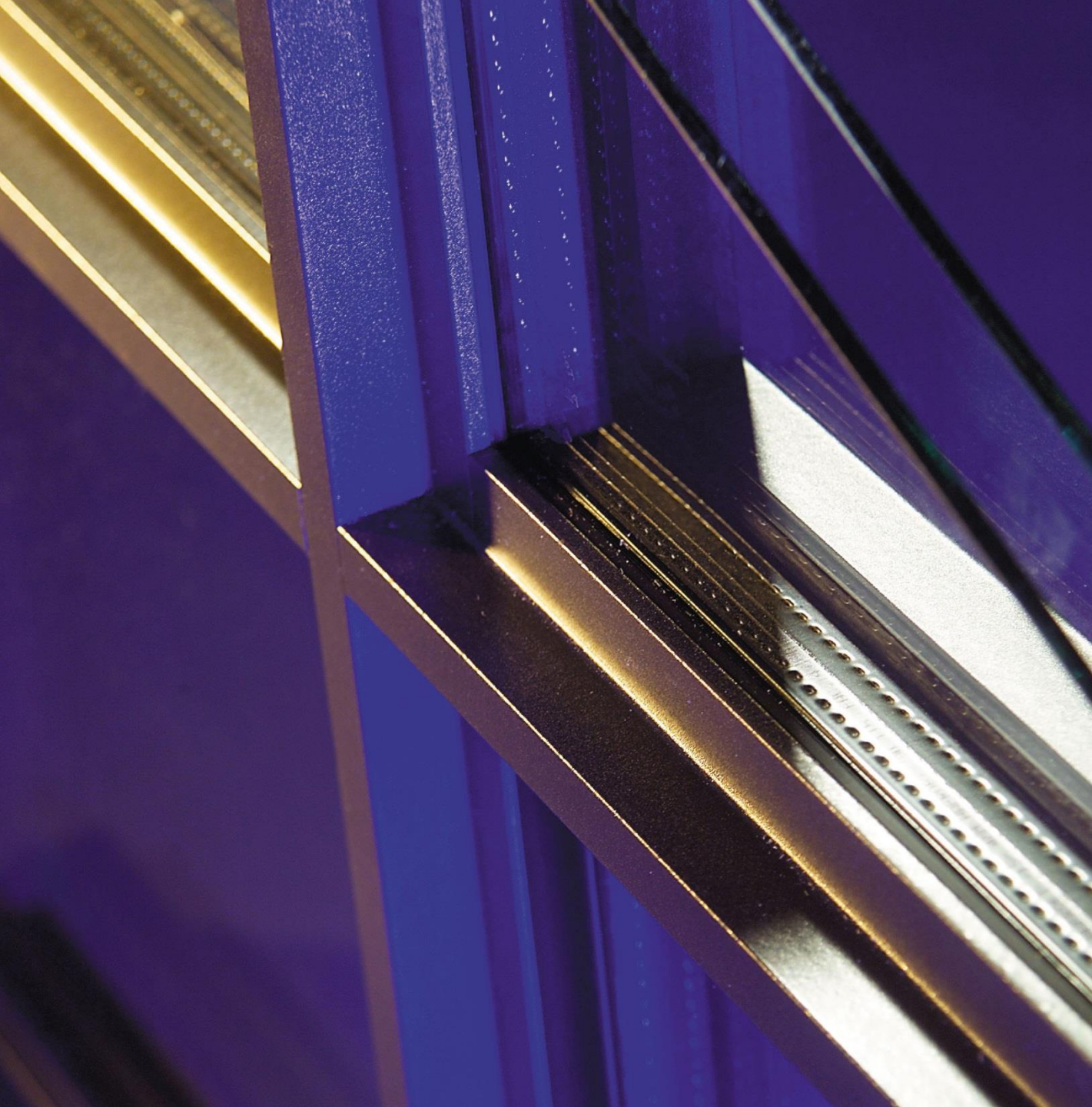
C.F. Møller



C.F. Møller



C.F. Møller



C.F. Møller



C.F. Møller

# ADDED VALUE AS A DRIVER OF RENOVATION







C.F. Møller

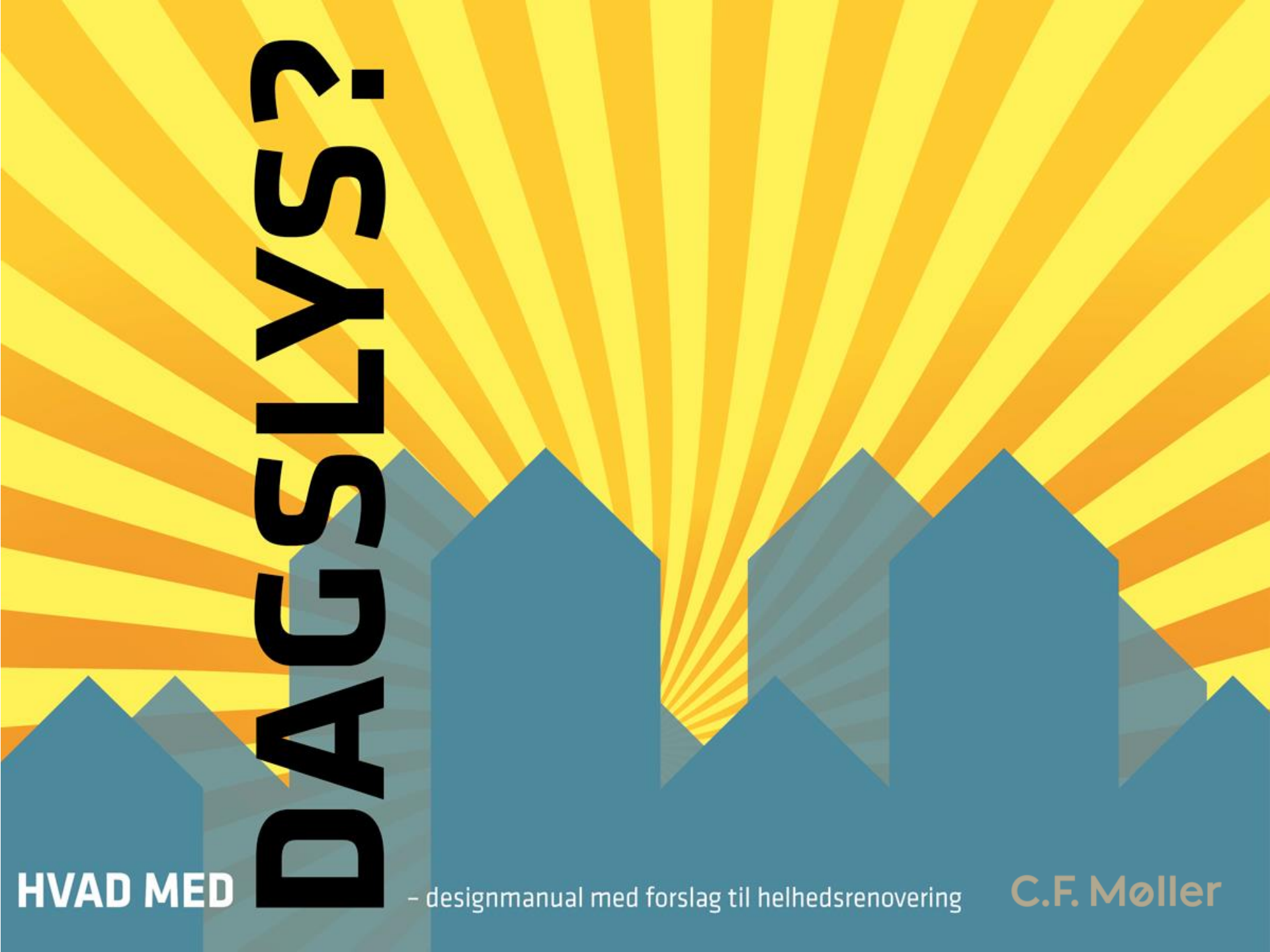




C.F. Møller



C.F. Møller



# HVAD MED DAGSLYS?

**HVAD MED**

- designmanual med forslag til helhedsrenovering

**C.F. Møller**



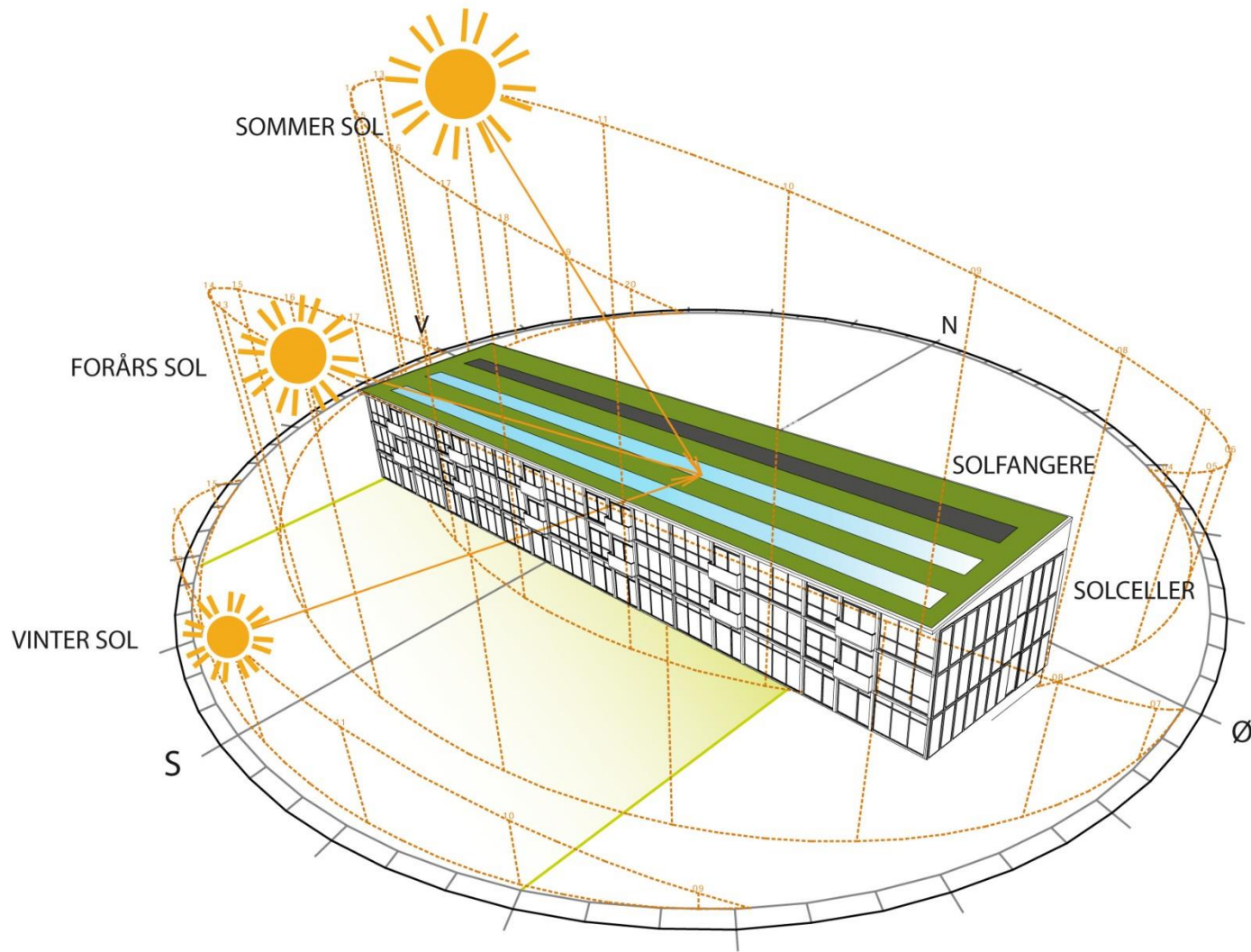
**Architects:** rönby.dk & Krydsrum Arkitekter.

**C.F. Møller**



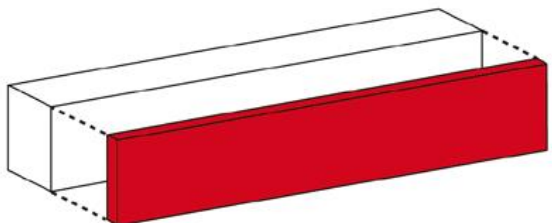
Architects: rönby.dk & Krydsrum Arkitekter.

C.F. Møller

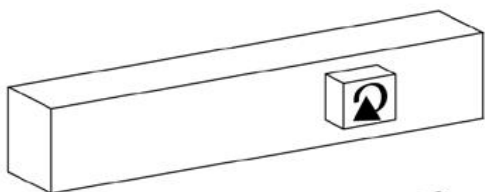




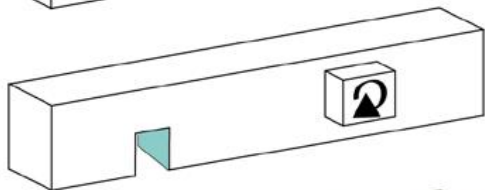
# BR10 NIVEAU 1



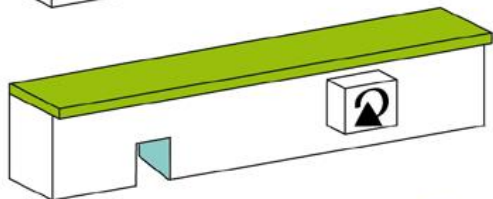
Eksisterende veranda arealer fjernes på alle blokke



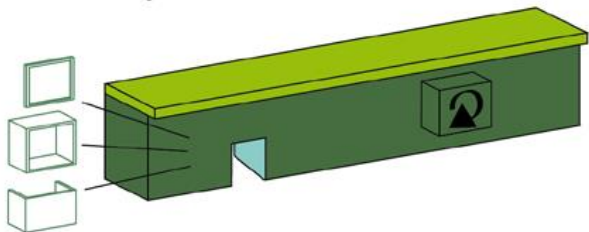
Nye energibesparende ventilationsanlæg i alle blokke



Dobbelthøje porte etableres i 11 nord-øst vendte blokke, og giver adgang til de bagvedliggende haverum +

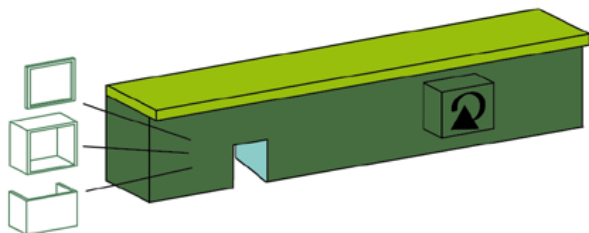


Nye grønne tage med udhæng på alle blokke

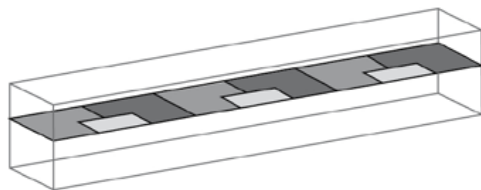


Nye energibesparende facader på alle blokke, inkl. nye vinduer, karnapper og altaner

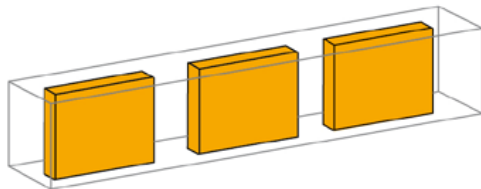
# LavE 2015 NIVEAU 2



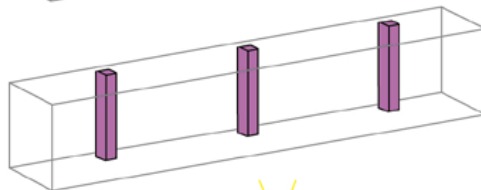
Niveau 1



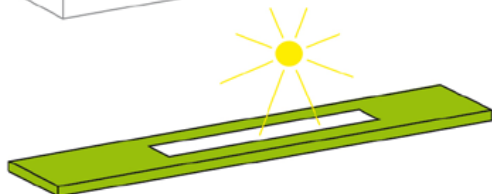
4- og 5 rumsboliger ombygges til 2- og 3 rumsboliger



Nye køkkener, bad og faldstammer etableres i nye centrale kerner

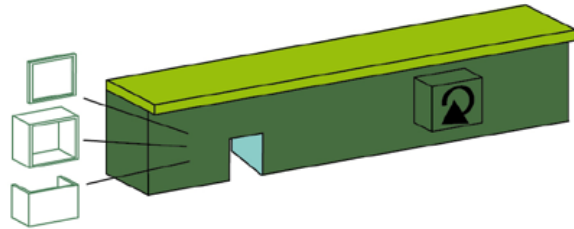


Der etableres elevatorer i 2 blokke

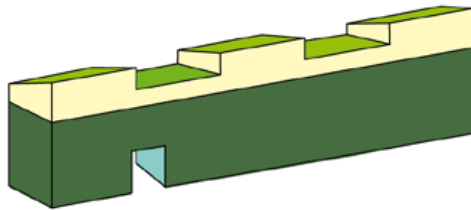


Der etableres solfangere / solceller på de nye tage

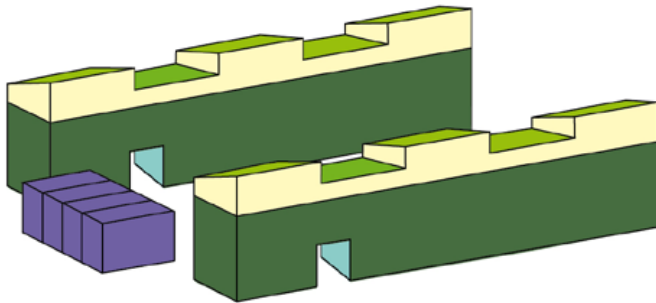
# VISION: NIVEAU 4



Niveau 1 + Niveau 2 + Niveau 3



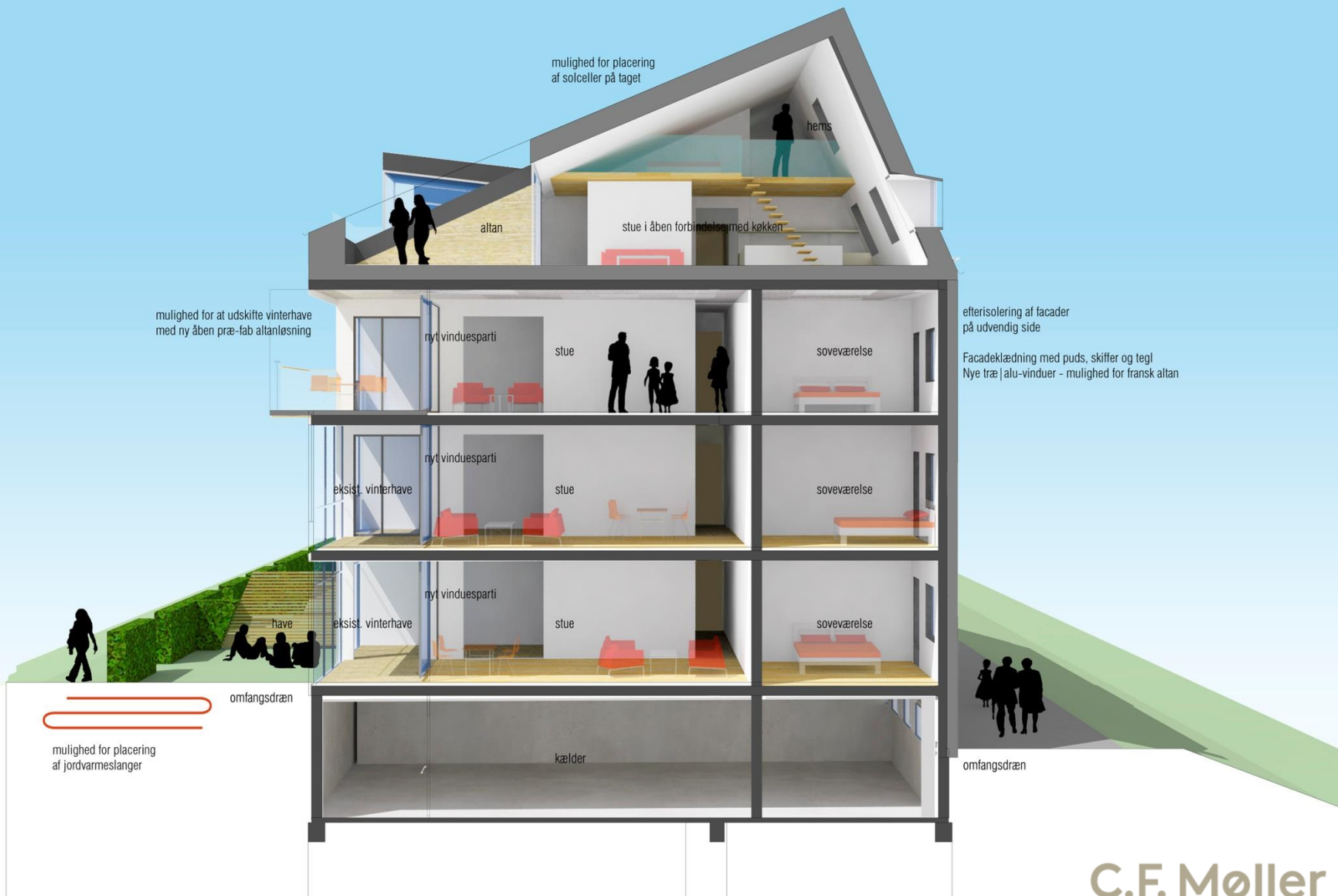
Mulighed for etablering af penthouse lejligheder



Mulighed for fortætning af bymiljø, ved etablering af 2 1/2 etagers huse



C.F. Møller



mulighed for placering af solceller på taget

hemis

altan

stue i åben forbindelse med køkken

mulighed for at udskifte vinterhave med ny åben præ-fab altanløsning

nyt vinduesparti

stue

soveværelse

efterisolering af facader på udvendig side

Facadeklædning med puds, skiffer og tegl  
Nye træ | alu-vinduer - mulighed for fransk altan

eksist. vinterhave

nyt vinduesparti

stue

soveværelse

have

eksist. vinterhave

nyt vinduesparti

stue

soveværelse

omfangsdræn

mulighed for placering af jordvarmeslanger

kælder

omfangsdræn



C.F. Møller



[WWW.CFMOLLER.COM](http://WWW.CFMOLLER.COM)

